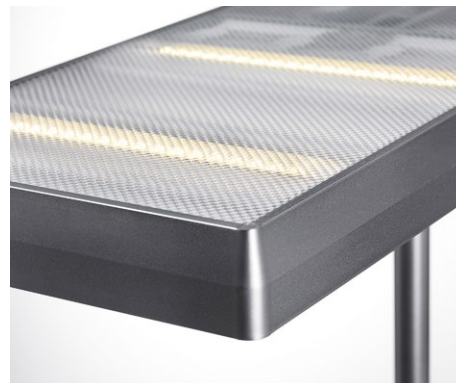




## LED Maxlight

- Professional LED floor lamp
- Direct and indirect illumination:  
- 67% direct light (33 W) - 33% indirect light (17 W)
- Direct and indirect light can be operated independently
- Switch "on/off" at the lamp head
- Glare-free technology thanks to diffuser with micro prism structure
- Easy and fast to assemble



### Technical data

Power:	50 W, 33 W direct, 17 W indirect
Weighted energy consumption:	50 kWh / 1000 h
Voltage:	100 – 240 V AC, 50 – 60 Hz
Luminous flux:	3700 Lumen
Luminous efficacy:	74 Lumen / Watt
Colour temperature:	4000 Kelvin (neutral white)
Maximum illuminance:	651 Lux (measuring distance 115 cm)
Colour rendering index (CRI):	> 84
Life time:	30 000 hours
Height:	1900 mm
Base:	400 mm x 250 mm (L x W)
Head of lamp:	550 mm x 300 mm (L x W)
Length of the cable:	2.3 m
Net weight:	9.8 kg
Material:	steel, aluminium, ABS, glare shield: polycarbonate
Packaging:	white packaging with coloured label
Light source:	1 parcel: 655 x 375 x 180 mm, 10.8 kg, girth: 1765 mm energy efficiency class: E model identification: maxli00000661

**Item number:** 41-5010.661.CH silver

### **Interchangeability**

The lighting source cannot be replaced. The construction of the luminaire does not allow the lighting source to be replaced, as there is a risk of damaging the luminaire.

### **Data verification**

Electrical and photometric data checked by the lighting lab of the University of Applied Sciences of the Grisons, Switzerland.

**styro ag**  
Frauholzstrasse 27  
CH-6422 Steinen  
www.styro.ch